



# WARREN LAND CONSERVATION TRUST

WE THINK THE WORLD OF WARREN

Newsletter | Summer 2022 | Volume 5 | Issue 1

## PRESIDENT'S LETTER

**It was a busy winter and spring** as we worked to get our new Board members involved in the day-to-day operations of the Land Trust. We had a second strategic planning session in February to set some short-term goals to help us work toward the three-year objectives we established last October. These goals centered around fleshing out our stewardship plan for our properties, working on our approach to communications with members and the community, setting up a volunteer coordination strategy and beginning the search for a part-time paid Executive Director.

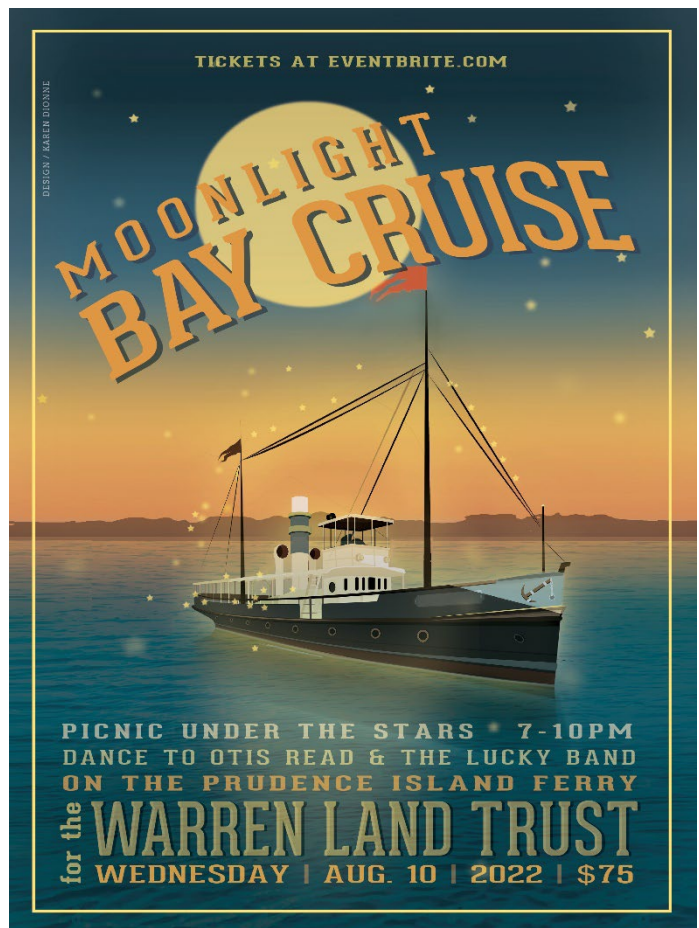
I am happy to report progress in all these areas with our new Board members taking a major role. Thanks to Karen, Max and Kate, we have e-news updates and a new Instagram account that will sync with our existing Facebook page. Kate and Max have also worked out a volunteer strategic plan with new ways to capture volunteer interest and document our work in monitoring our properties. Johanna is bringing some of her students from RISD out to our preserves to do research and help with a more comprehensive survey of the sites.

We advertised for the Executive Director position approved by the Board, and we received applications from some excellent prospects. Our search team has conducted interviews and will make a recommendation to the Board in the very near future. As you will see from the updates in this newsletter, we need the support of paid staff to help handle all of our projects and priorities. We recognize that supporting a paid position will be a financial challenge as well as a major change in how we do things, but we are confident our members will be there to help as we continue to pursue WLCT's mission of preserving Warren's open spaces for all to enjoy.

Rock Singewald, President, WLCT

## SAVE THE DATE!

**AUG 10 2022 CRUISE**



Graphic design by Karen Dionne

## Contact the WLCT



[warrenlct.org](http://warrenlct.org)



[facebook.com/WLCTRI](https://facebook.com/WLCTRI)



[instagram.com/warrenlandtrustri](https://instagram.com/warrenlandtrustri)



[warrenlctri@gmail.com](mailto:warrenlctri@gmail.com)



P.O. Box 565, Warren, RI 02885



## DETENTION POND PROJECT



*Google Earth satellite imagery showing bright green algae on detention pond in summer.*

The WLCT is currently working on a **marsh and wetland rehabilitation** project at the Haile Farm Preserve. The surrounding watershed and a manmade pond on the property have been contributing harmful pollutants and microorganisms to the marsh. A plan is being engineered in collaboration with Save the Bay and the Warren DPW to retrofit the pond and install upstream stormwater treatment practices to mitigate the damage caused to the Palmer River watershed.



*Toxic algae causing eutrophication at the detention pond.*

## INSTAGRAM ACCOUNT

Come follow the WLCT @warrenlandtrustri on Instagram to keep up with our upcoming events and see photos from our properties around Warren. Tag us in your photos to possibly be featured on our page!



*Trail team finishing up on new boardwalks at Haile Farm Preserve.*

## TRAILS TEAM THE WORK NEVER STOPS

**We expanded the number of trails** available to the public over the last few years, but the work doesn't stop there. Keeping track of the

trail conditions and scheduling work parties becomes a bigger job in the spring and summer. Our Trail Team volunteers, young and not so young, have been very active this spring as we constructed new boardwalks for close to 200 feet of trails at Haile Farm Preserve. We also received help from a group of volunteers organized by the RI Land Trust Council to add additional boardwalk sections. This work makes our trails significantly more accessible in all weather conditions.

In addition to boardwalks, we also had volunteers trimming the growth along trails at Haile Farm, Jacob's Point and Toweset Landing. More will need to be done as the growing season heats up, so keep an eye out for messages about when you can join in on the fun to help keep our Preserves in good condition for public use. Thanks to all who pitched in to help.

## 2022 Board of Directors

President **Rock Singewald**

Vice President **David Weed**

Secretary **Martha Antaya**

Treasurer **E. Jenny K. Flanagan**

Board Members **Johanna Barthmaier-Payne, Max Bliss, Karen Dionne, Katelyn Pisano, Scott Spear**



**FEEDING  
TIME AT  
JACOB'S  
POINT**

**Forty-one Purple Martin chicks  
hatched and 28 Saltmarsh  
Sparrow nests established  
following the spring migration!!**



*Purple Martin hatchlings*



*Saltmarsh Sparrow hatch day*

**PARTNERS IN CONSERVATION**

**One of our biggest challenges** in providing proper stewardship of our properties is the need to manage collaboration with a variety of valuable partners. We have ongoing relationships with the Natural Resources Conservation Service (NRCS) of the USDA at both Haile Farm and Sowams Meadows. Save the Bay is also a partner at both properties, and they were instrumental in working with DEM, CRMC and the Army Corps of Engineers in obtaining permits to pursue restoration plans for both the salt marshes and the uplands. We have also been working for months with the EPA's Southeast New England Program and the Town of Warren on a stormwater management plan to address the contaminated runoff entering the Town's detention pond adjacent to our Haile Farm property.

Through monthly coordination updates and numerous site visits, we have handled both the Forest Management Plan at Haile Farm and worked to bid and award a contract for a multi-year restoration project at Sowams Meadows. We successfully worked with a forestry contractor at Haile Farm to amend the existing plan to take current conditions into consideration, and we hired a local contractor, Staton's Landscaping, to remove invasive plants and mow a two-acre meadow. We also worked with volunteer experts to conduct a plant species inventory at Sowams Meadows to inform our decisions on how to best approach improvements to the native pollinator resources.

We are also working with the Town and its Conservation Commission to create a map of the open space properties in Warren that should be priorities for conservation efforts. This collaboration also includes the Nature Conservancy on some potential conservation easements. All these partnerships take a lot of time and a lot of calls and meetings, but they are essential to our ability to maintain and improve the valuable resources under our protection. We can't do it alone!



*Dick Hallberg's Trail at Haile Farm Preserve*



## RETURN OF THE OSPREYS !

**Butch Lombardi's Osprey presentation was enjoyed by all** and highly informative. At this April 24th event, Butch shared many of his stunning photographs of the ospreys that live and thrive in our environment. A walk to observe the Osprey nests and birds following the talk created a real live connection!

**Atwater Donnelly** delighted us with a set of folk songs that had birds in the lyrics. These were the perfect tunes to continue the theme and celebration.

WLCT is grateful to Butch Lombardi and Atwater Donnelly, as well as the Audubon Society of Rhode Island for their continued support and for making this event a success.



*Naturalist and Conservation Commission President Butch Lombardi leads a walk and discussion at the Audubon Society of Rhode Island's Nature Center and Aquarium*



*Elwood Donnelly and Aubrey Atwood performing in ASRI's Nature Center Auditorium*

## LANDSCAPES AND CLIMATE CHANGE

Our landscapes are facing environmental impacts from climate change. **Our landscapes are highly dynamic** and their appearance

will quickly change in unknown ways to meet the functional requirements of their evolving natural systems. As a result, the need to establish methods for monitoring both the ecological health and the cultural relevance of our impacted landscapes is imperative for determining ecologically and socially responsive long-term land management strategies.

**This summer**, RISD Landscape Architecture Department Head Johanna Barthmaier-Payne, and Plants Botany and Ecology faculty Ann Kearsley, together with their student research assistants Corey Watanabe and Carl Garvey, will be working at two specific sites at Haile Farm Preserve. They will be monitoring climate change's effects on succession in coastal landscapes using digital sensor stations and observational field methods. Additionally, Corey will work closely with the Trust's stewardship committee to complete monitoring surveys of each parcel.



## 2022 Donors

The Warren Land Conservation Trust's would like to thank all our donors to our 2022 fund drive. Also, we especially wish to acknowledge our donors who gave above and beyond:

### \$125 to \$499

- |                    |                     |
|--------------------|---------------------|
| * Jack Flynn       | * Sarah Weed        |
| * Michael Gerhardt | * Martha Fish       |
| * Patricia Read    | * John Marshall     |
| * Marie Companion  | * Jacqueline Russom |
| * Nancy Fritz      | * Martha Antaya     |
| * Kate Pisano      | * Arvia Morris      |

### \$500 to \$999

- |                  |                               |
|------------------|-------------------------------|
| * Julie Blount   | * Rock Singewald & Anne Raver |
| * Jenny Flanagan | * Peter Whealton              |
| * Jane Harrison  | * Scott Roop                  |

# Support your Warren Land Conservation Trust

## VOLUNTEER WITH WLCT

**Volunteers play a critical role in WLCT's work,** and we are so grateful to the community members who share their time and talents!

WLCT has a wide variety of volunteer needs that are sure to fit your skills and interests. If you are interested in any of the opportunities below, or would like to talk more about how you can help WLCT, please submit the Volunteer Interest Form at [warrenlct.org/support-us/volunteer/](http://warrenlct.org/support-us/volunteer/) and we'll be in touch with more details!

### FIELD WORK

*Supported by the Stewardship Committee*

- **Trail Maintenance** – Support access to WLCT public properties through light construction projects and trail cleaning (as needs arise)
- **Monitor** – Periodically visit and report on WLCT property conditions and observations (training included)

### COMMUNITY OUTREACH

*Supported by the Communications Committee*

- **Newsletter Editor** – Collect, organize, and edit content for the WLCT digital and paper newsletters.
- **Social Media Manager** – Drive community engagement through our Instagram, Facebook, and other social media platforms.
- **Photographer** – Communicate WLCT's story and value through images of our properties and events.

**These are just some of our current volunteer needs. We are excited to know how you would like to help!**

## UPCOMING EVENTS

**Save the dates** and stay tuned for more information about these events:

### **RI Land and Water Summit: Sustaining and Serving in Unprecedented Times**

July 14-16, URI Kingston Campus  
[www.landandwaterpartnership.org/index.php](http://www.landandwaterpartnership.org/index.php)

### **WLCT Annual Moonlight Bay Cruise**

Wednesday August 10, 7-10pm  
Rain date Thursday, 11th  
Tickets on Eventbrite.com

RI Land Trust Days

### **Kite flying at Jacob's Point**

Saturday, August 20, 10 am

RI Land Trust Days

### **Row to Tom's Island**

September (date and time to be announced)

### **Autumn walks at Haile Farm Preserve**

to be announced

## PLEASE SUPPORT YOUR LOCAL LAND TRUST!

Lastly, if you believe that the Warren Land Conservation Trust's ongoing work to protect open space in Warren and make it available to the public is of value to the community, ***please use the enclosed remittance envelope.*** Or you can go to our **SUPPORT US** page on our web site [warrenlct.org](http://warrenlct.org).

